



GAMMON TECHNICAL PRODUCTS, INC.
 P.O. BOX 400 - 2300 HWY 34
 MANASQUAN, N.J. 08736

PHONE 732-223-4600
FAX 732-223-5778
WEBSITE www.gammontech.com
STORE www.gammontechstore.com

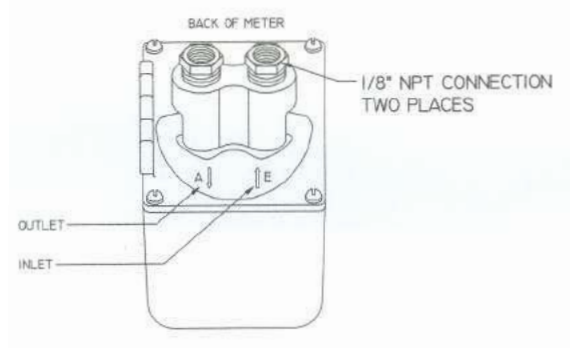
**METER
 MONITOR**

**BULLETIN 65
 (10-10)**

CLOSED CIRCUIT TESTING WITH THE METER MONITOR

AVOIDS THE NEED FOR A
 MEASURING BUCKET

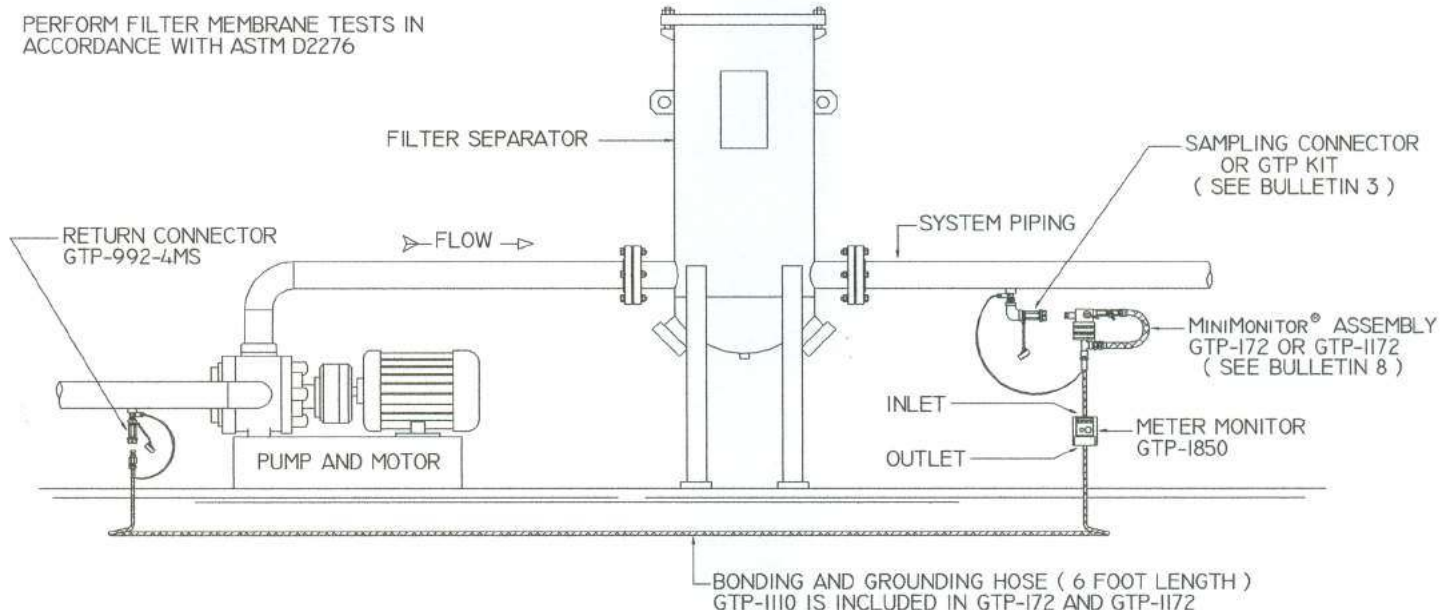
AVOIDS THE NEED TO
 DISPOSE OF FUEL



When performing filter membrane tests, the difficult part of the task is disposing of the test fuel. The **Meter Monitor** solves that problem completely. The flush and the test fuel are both returned to the fuel system and are never exposed to air, rain, or other contaminant sources. No buckets, funnels, or fuel spills.

Available with gallon or liter calibration.

NOTE: The standard model is made for petroleum service (jet fuel). An optional version for metering anti-icing additive (diEGME) is also available with specially-designed seals.



NOTE.. IF STANDARD 6 FOOT LENGTH IS TOO SHORT, CONTACT GAMMON TECHNICAL PRODUCTS FOR A LONGER VERSION OF THE GTP-1110

TESTING PROCEDURE

1. Install a return connector at the inlet of the system pump ([Model GTP-992-4MS](#)).
2. Using a MiniMonitor[®] housing that you may already own, insert a plastic monitor ([See Bull. 8](#)).
3. Install the Meter Monitor between the MiniMonitor[®] assembly and grounding hose ([GTP-1110](#)) which comes with the MiniMonitor[®] kit.
4. Turn the MiniMonitor[®] valve to the stop position.
5. Start flow in fuel system and read the meter position, for example 000089.23
6. Connect the MiniMonitor[®] inlet to the sampling connector and connect the outlet of the hose ([GTP-1110](#)) to the return connector.

NOTE: The six numerals to the left of the decimal point read whole gallons in the windows. The right hand window reads tenths (0.1) of gallons. The dial reads hundredths (0.01) and can be estimated to 0.002. This is a non-reset type meter.

7. Turn the MiniMonitor[®] valve to the flush position. If you plan to flush one gallon, stop the flushing after one gallon. In this example, stop at a reading of 000090.23.
8. Turn the MiniMonitor[®] valve to the test position. Then turn the valve off when the correct number of test gallons has passed. Disconnect the return connection, then the sample connection.

NO MUSS - NO FUSS - NO MESS - THE TEST IS FINISHED

CAUTION: During the initial start-up procedure, air passing through the meter can cause uncontrolled and damaging rotating speed. On initial start-up, open the inlet valve very slightly until air has been displaced.

NOTE: The return line may also be connected anywhere that the pressure is reasonably less than the sampling pressure - to the storage tank, the truck tank, even a venturi throat. For operating at pressures over 125 psi, contact the factory or your distributor.

Connections: 1/4" NPT, inlet and outlet. We install bushings to 1/8" NPT.

HOW TO ORDER

GTP-1850	US gallon calibration
GTP-1850A-1	Same as GTP-1850 but with special seals for FSII, diEGME, etc.
GTP-1850A-3	Metric (liter) calibration
GTP-1850A-4	Same as GTP-1850A-3 but with special seals for FSII, diEGME, etc.